

MARKETING

BLVD

DENMAN PROSPECT,
CNR OF JOHN GORTON DRIVE
& HOLBOROW AVE

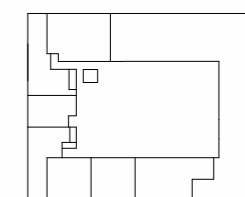
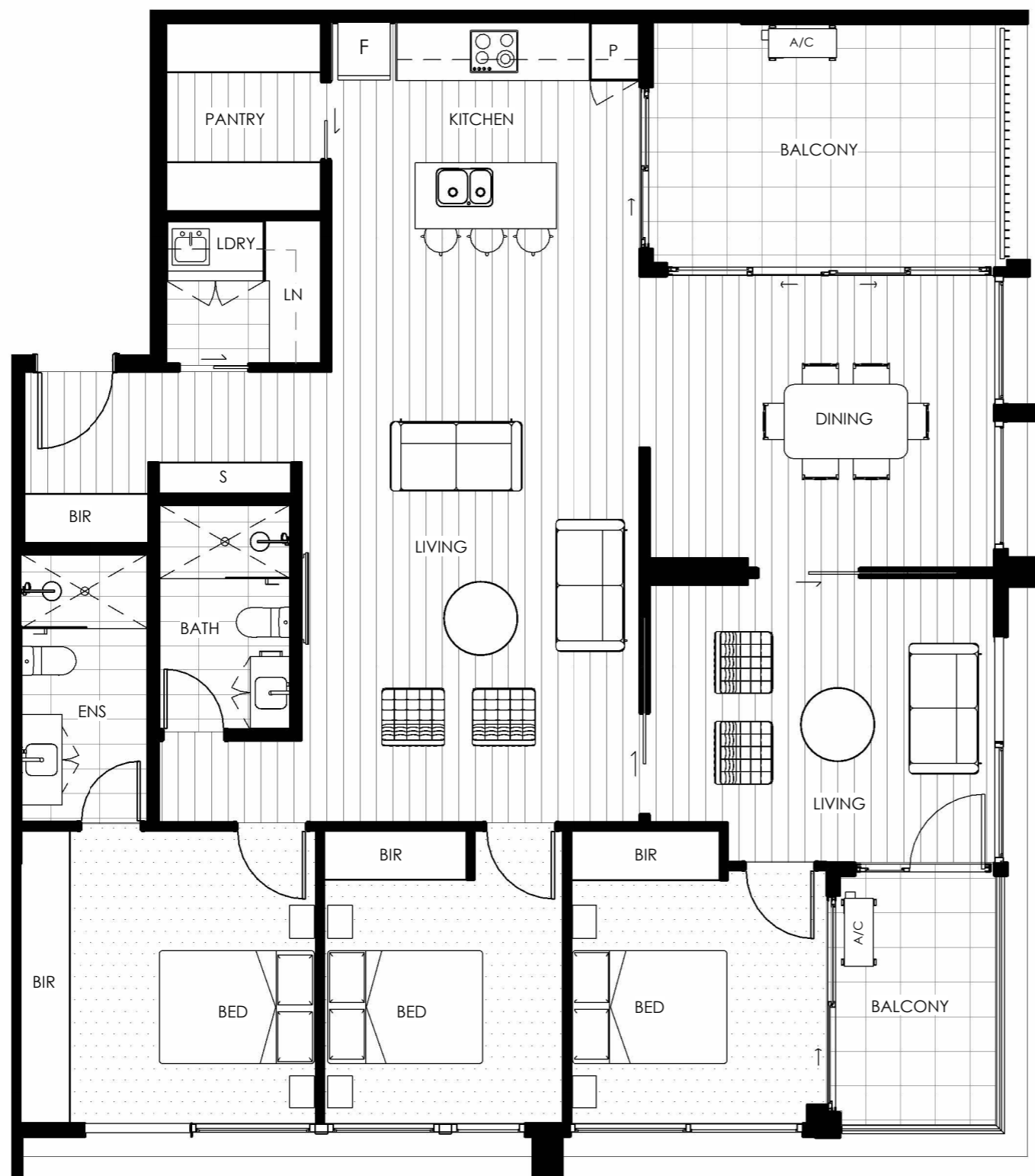
Apartment Type Unit Numbers

3B.3 (C)

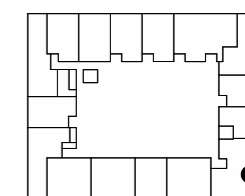
3 Bedroom
2 Bathroom
2 Living
2 Car Space

LEVEL	BUILDING	UNIT #
LEVEL 4	C	406
LEVEL 5	C	506
LEVEL 6	C	606

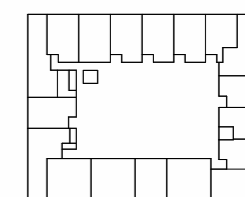
AREA TYPE	AREA
LIVING	141 m ²
BALCONY	19 m ²
	160 m ²



LEVEL 7



LEVEL 4 - 6



LEVEL 2 - 3



LEGEND

AC	Air Conditioning	MPR	Multi Purpose Room
BATH	Bathroom	LDRY	Laundry
BED	Bedroom	LN	Linen
BIR	Built In Robe	P	Pantry
ENS	Ensuite	PWDR	Powder Room
F	Fridge Niche		

MARKETING

BLVD

DENMAN PROSPECT,
CNR OF JOHN GORTON DRIVE
& HOLBOROW AVE

Apartment Type Unit Numbers

3B.4 (C)

3 Bedroom
3 Bathroom
2 Car Space

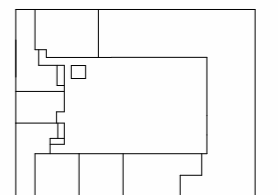
LEVEL	BUILDING	UNIT #
LEVEL 4	C	410
LEVEL 5	C	510
LEVEL 6	C	610

AREA TYPE	AREA
LIVING	111 m ²
BALCONY	17 m ²
	128 m ²

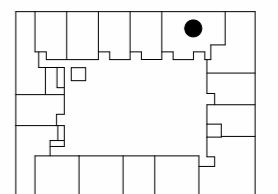


LEGEND

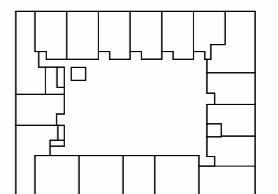
AC	Air Conditioning	MPR	Multi Purpose Room
BATH	Bathroom	LDRY	Laundry
BED	Bedroom	LN	Linen
BIR	Built In Robe	P	Pantry
ENS	Ensuite	PWDR	Powder Room
F	Fridge Niche		



LEVEL 7



LEVEL 4 - 6



LEVEL 2 - 3

MARKETING

BLVD

DENMAN PROSPECT, CNR OF
JOHN GORTON DRIVE & HOLBURROW STREET

Apartment Type

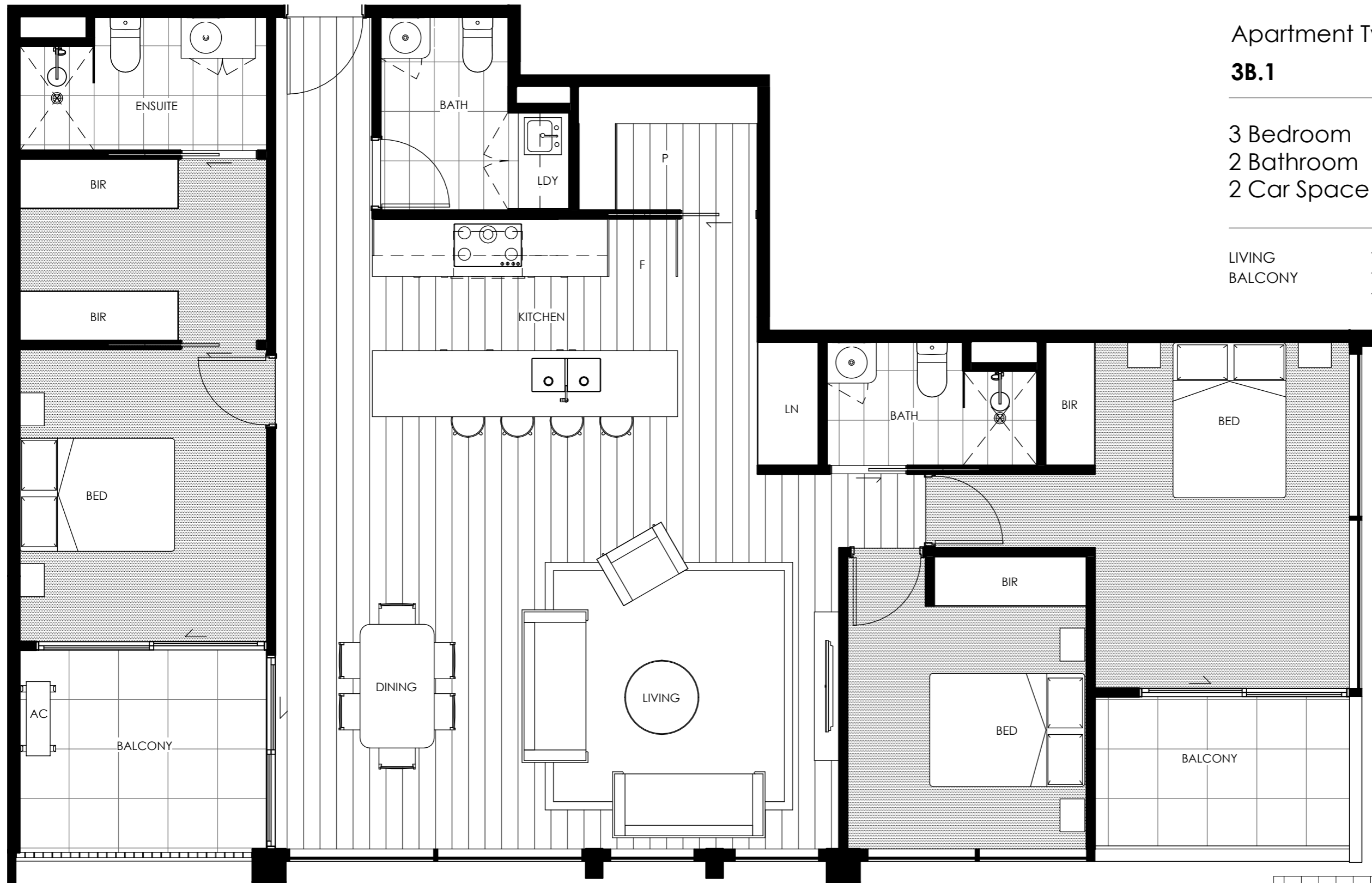
Unit Numbers

3B.1

3 Bedroom
2 Bathroom
2 Car Space

LEVEL 6 A 609
LEVEL 6 B 609

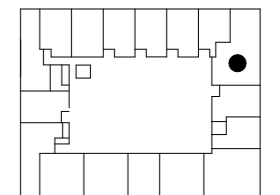
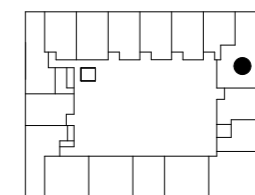
LIVING 125 m²
BALCONY 14.5 m²
139.5 m²



LEGEND

- | | | | |
|------------|--------------------|-------------|-------------|
| AC | Air Conditioning | LDY | Laundry |
| BED | Bedroom | LN | Linen |
| BIR | Built In Robe | P | Pantry |
| F | Fridge Niche | PWDR | Powder Room |
| MPR | Multi Purpose Room | | |

LEVEL 6



NB: ARROW SHOWS NORTH ORIENTATION FOR UNIT

BOULEVARD

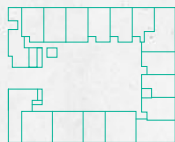
Unit Type 3B.5 (C) ADAPTABLE

Bedrooms: 3 **Living:** 172.5m²
Bathrooms: 2 **Outdoor:** 51.5m²
Living: 2 **Total:** 224m²
Car Spaces: 2

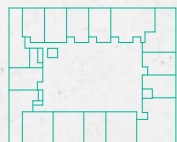
Units Numbers

Level 7: C705

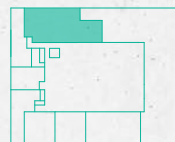
NORTH →



LEVEL 1 - 3



LEVEL 4 - 6



LEVEL 7

Building C



M=Mirrored, ADH=Adaptable. The floor plan layout may be subject to minor amendments and dimensional changes to suit final working drawings and grid layouts which are subject to the Building Code of Australia. Dimensions shown are to structural faces. The area of each unit is calculated using ACTPLA guidelines. It is the buyer's responsibility to refer to their contract of sale to verify that any information provided in relation to the property is correct and accurate. The furniture layout and sizes portrayed in this floor plan are indicative only and should not be relied upon by the buyer. Landscaping is indicative only, refer to landscape plan and inclusions in your contract of sale for final finishes. MIN EER 5.1



BOULEVARD

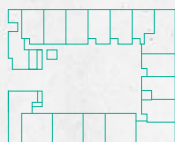
Unit Type 3B.6 (C) ADAPTABLE

Bedrooms: 3 **Living:** 153.5m²
Bathrooms: 2 **Outdoor:** 66.5m²
Car Spaces: 2 **Total:** 220m²

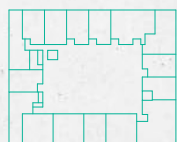
Units Numbers

Level 7: C704

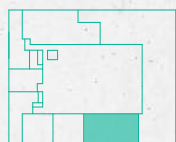
NORTH →



LEVEL 1 – 3



LEVEL 4 – 6



LEVEL 7

Building C



M=Mirrored, ADH=Adaptable. The floor plan layout may be subject to minor amendments and dimensional changes to suit final working drawings and grid layouts which are subject to the Building Code of Australia. Dimensions shown are to structural faces. The area of each unit is calculated using ACTPLA guidelines. It is the buyer's responsibility to refer to their contract of sale to verify that any information provided in relation to the property is correct and accurate. The furniture layout and sizes portrayed in this floor plan are indicative only and should not be relied upon by the buyer. Landscaping is indicative only, refer to landscape plan and inclusions in your contract of sale for final finishes. MIN EER 5.1



0 1 2 3 4 5m

BOULEVARD

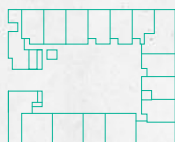
Unit Type 3B.6 (C) ADAPTABLE

Bedrooms: 3 **Living:** 153.5m²
Bathrooms: 2 **Outdoor:** 66.5m²
Car Spaces: 2 **Total:** 220m²

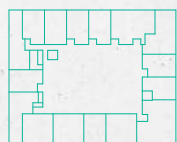
Units Numbers

Level 7: C704

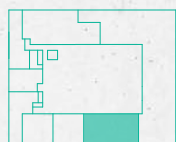
NORTH →



LEVEL 1 – 3



LEVEL 4 – 6

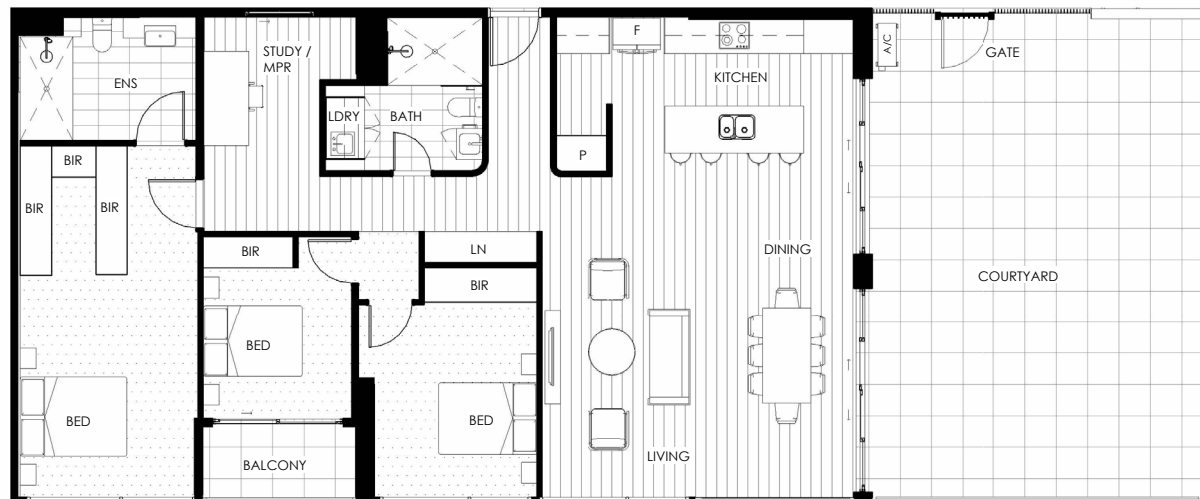


LEVEL 7

Building C



M=Mirrored, ADH=Adaptable. The floor plan layout may be subject to minor amendments and dimensional changes to suit final working drawings and grid layouts which are subject to the Building Code of Australia. Dimensions shown are to structural faces. The area of each unit is calculated using ACTPLA guidelines. It is the buyer's responsibility to refer to their contract of sale to verify that any information provided in relation to the property is correct and accurate. The furniture layout and sizes portrayed in this floor plan are indicative only and should not be relied upon by the buyer. Landscaping is indicative only, refer to landscape plan and inclusions in your contract of sale for final finishes. MIN EER 5.1



0 1 2 3 4 5m